



Info 3

Chemical industry



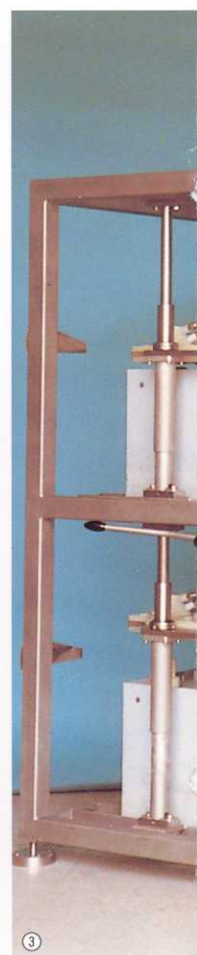
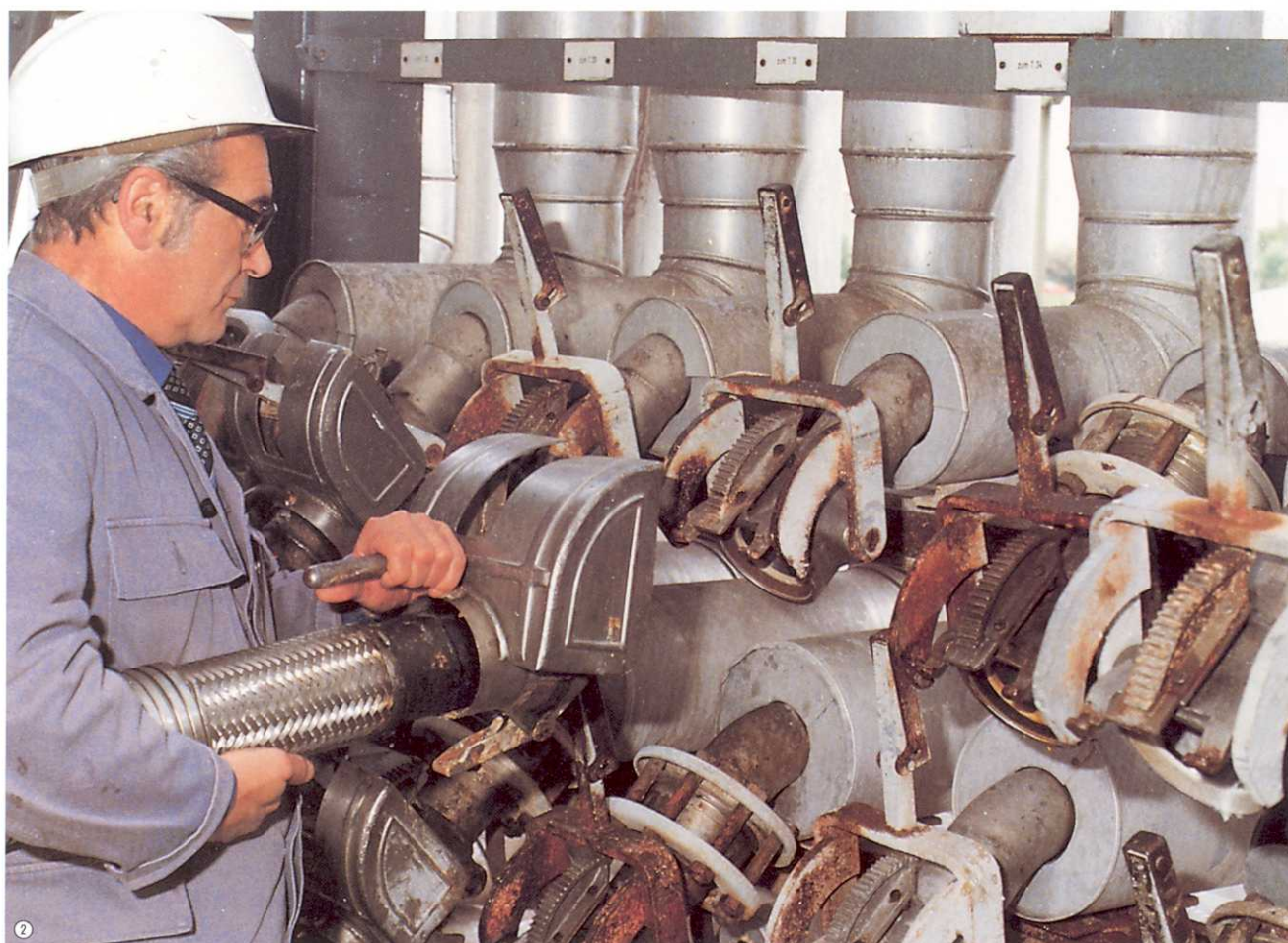
Connections in the chemical industry – safe, quick and reliable



The efficiency of WALTHER Quick Release Coupling Systems is demonstrated in the chemical industry daily. Commercial production and transport methods require quick and safe connection and disconnection of lines. Such lines also need to be able to withstand critical and aggressive media in order to meet safety requirements and environmental conditions.

The expertise of WALTHER-PRAEZISION is clearly reflected in their mono-couplings, multi-couplings and docking systems by the following features:

- appropriate materials
- PTFE seals for critical media
- non-interchangeable couplings and coupling types
- integrated, codeable proximity switches
- manually operated or automatic safety-locking devices
- Clean Break valves for spillage free connection and disconnection



2

3



① Clean Break Coupling NB 100 with safety locking installed at a transfer point.

② Lever operated couplings NB 50 and NB 80 with PTFE seals, safety catch and protective shield installed at a distribution point for highly viscous media with subsequent steam cleaning.

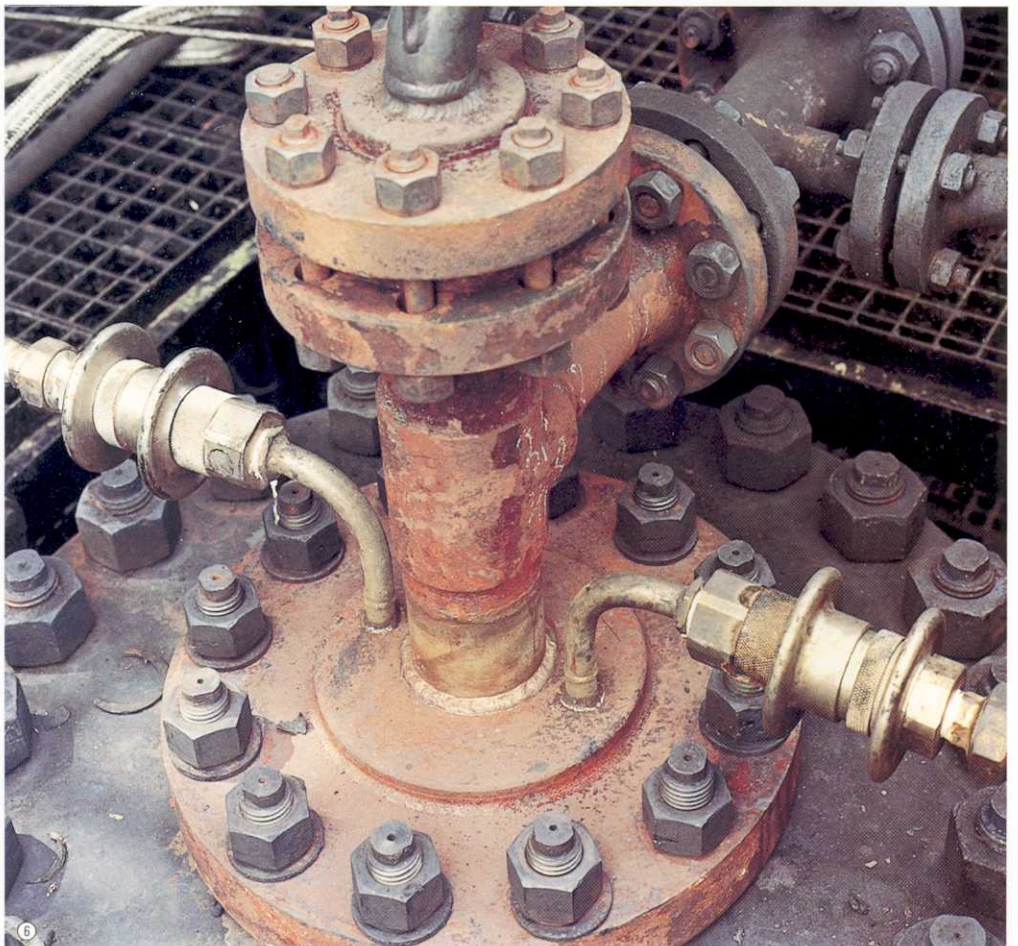
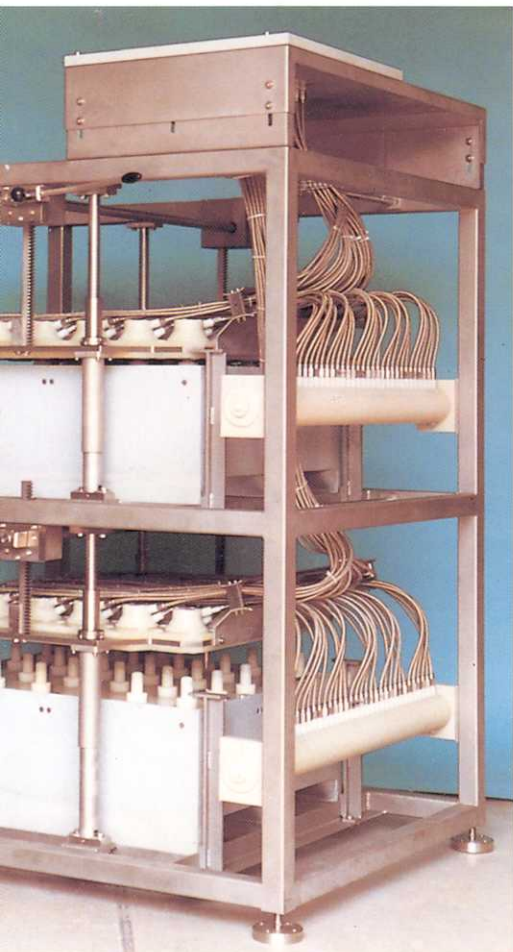
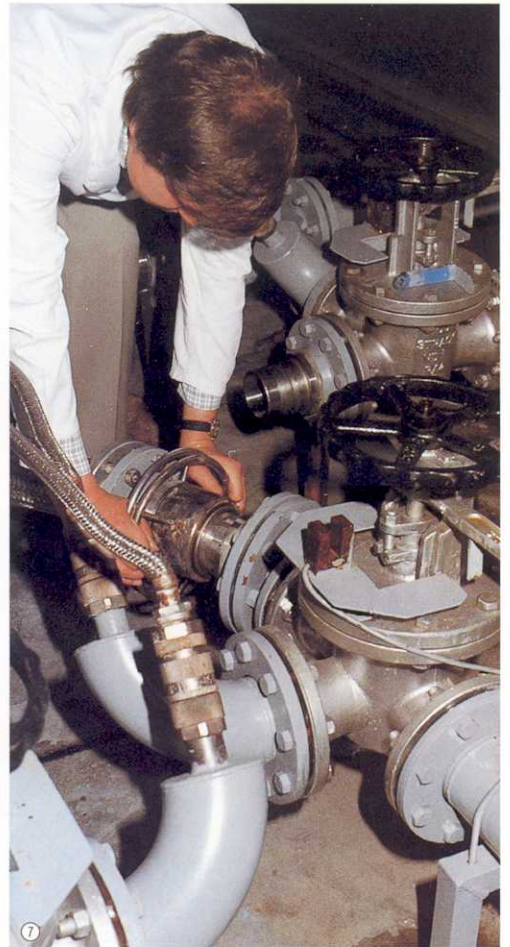
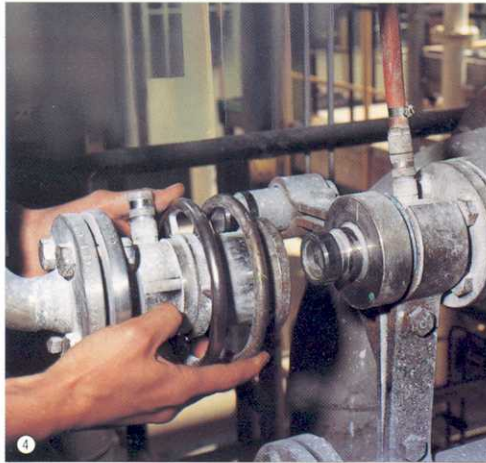
③ Fraction collector for quick and leak free filling of palletized bottles. 2 docking systems each containing 30 coaxial elements at first allow an internal atmosphere to be created (e.g. nitrogen), which is then purged from the system during filling.

④ Self Sealing Coupling NB 32 with grips for ease of use and additional coupling for flushing of line prior to disconnection.

⑤ Self Sealing Coupling NB 19 with PTFE seals and well-insulated locking sleeve for steam cleaning lines up to 250°C.

⑥ High Pressure Quick Release Couplings NB 20, with solid ring grips for ease of use, used for high pressure steam cleaning of autoclaves.

⑦ Through Type Coupling NB 80 installed on a pump and Self Sealing Coupling NB 19 for subsequent steam cleaning.



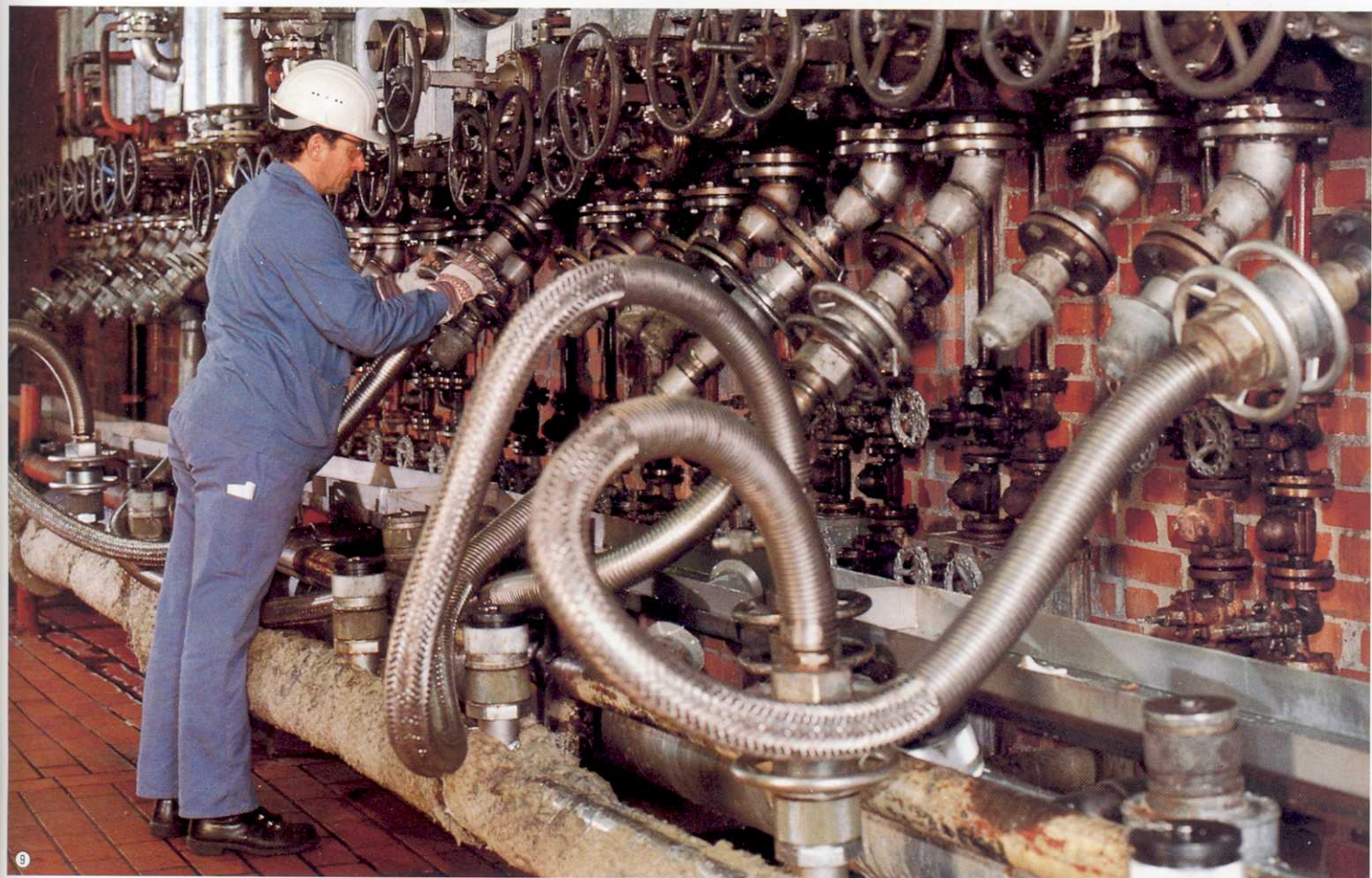
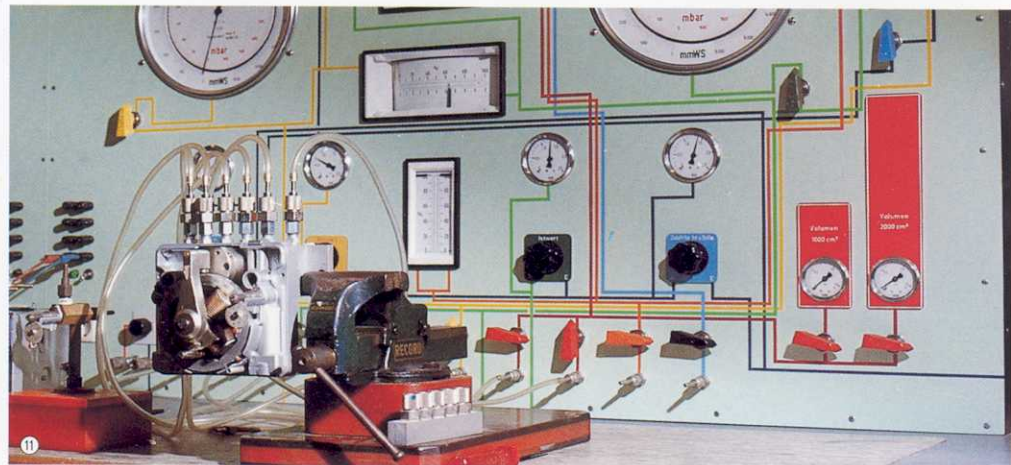
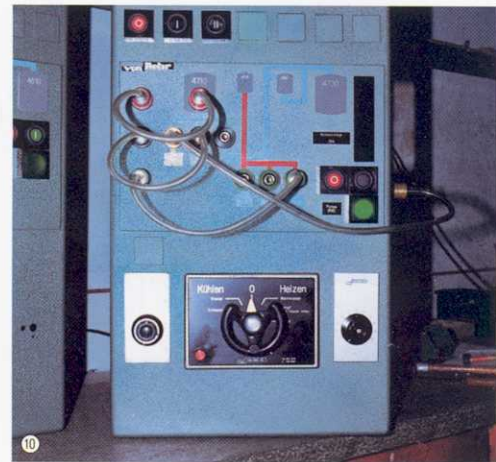


⑧ Self Sealing Coupling NB 32 with ring grips at a discharge point.

⑨ Self Sealing Coupling NB 32 with ring grips installed at a distribution point for a variety of liquids.

⑩ Self Sealing Couplings NB 4 with non-interchangeable circular rings and colour coded, mounted on a switch cabinet for pneumatic process control.

⑪ Function testing of valves. The lines are installed between the test piece and the test bed using a Self Sealing Coupling NB 6.



8

11

10

9

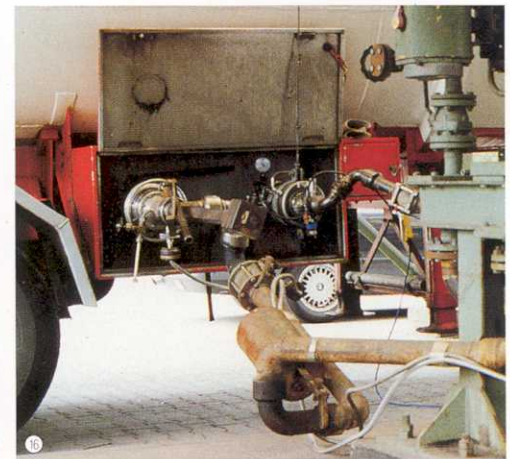
⑫ Non-interchangeable Self Sealing Couplings NB 32 and NB 50 connecting media and gas lines in a filling station for liquid chemicals.

⑬ Clean Break Coupling NB 80 with separate locking and valve opening mechanism, integrated pneumatic cylinder for opening and closing valves under pressure, locking device for when valves are open and clamps to support its weight.

⑭ Self Sealing Couplings NB 19 with ring grips installed on superheated steam cleaning lines.

⑮ Rail tankers being filled; Clean Break Couplings NB 90 installed on the media lines and NB 50 on the gas lines.

⑯ Suspended Screw Type Couplings in a filling station; NB 80 installed on the media lines and NB 50 on the gas lines.





Carl Kurt Walther
GmbH & Co. KG
P.O.B. 42 04 44
42404 Haan
Westfalenstraße 2
D-42781 Haan
Phone: +49 (0) 2129 / 5 67-0
Fax: +49 (0) 2129 / 5 67-450
E-Mail: info@walther-precision.de
Internet: www.walther-precision.de